

## Mountain Pine Beetle & Ips Engraver Beetle

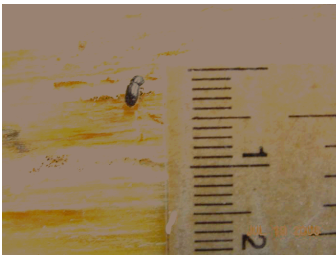
### **Mountain Pine Beetle (*Dendroctonus ponderosae*)**

- Kills trees by mass-attacking pines, eating the food and water conducting cells of the trees.
- Carries blue stain fungus which clogs the water conducting cells of the tree.
- Attacks the entire trunk of the tree.

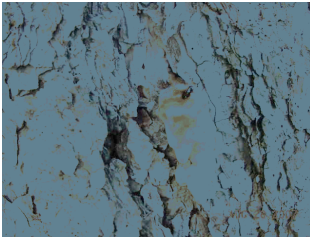
### **Spruce IPS, Engraver Beetle (*Ips hunteri*)**

- Kills trees by eating the food and water conducting cells of the tree.
- Does not carry blue stain fungus.
- Typically attacks the top of the tree first.

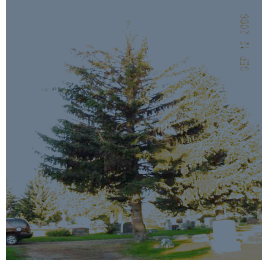
### **Average Pine Beetle Size**



### **Mountain Pine Beetle Attacking the Trunks of Austrian and Scotch Pine**



### **Ips Engraver Beetle Exiting Spruce trunk and Attacking Crown of Spruce**



### **Protect your Trees**

- If the tree is still “Green”- Deep Root Feed (quarterly), Spray bi-annually, and Water once a week (minimum).
- If the tree is Dead or Dying – Remove tree and stump, dispose of all wood and brush.